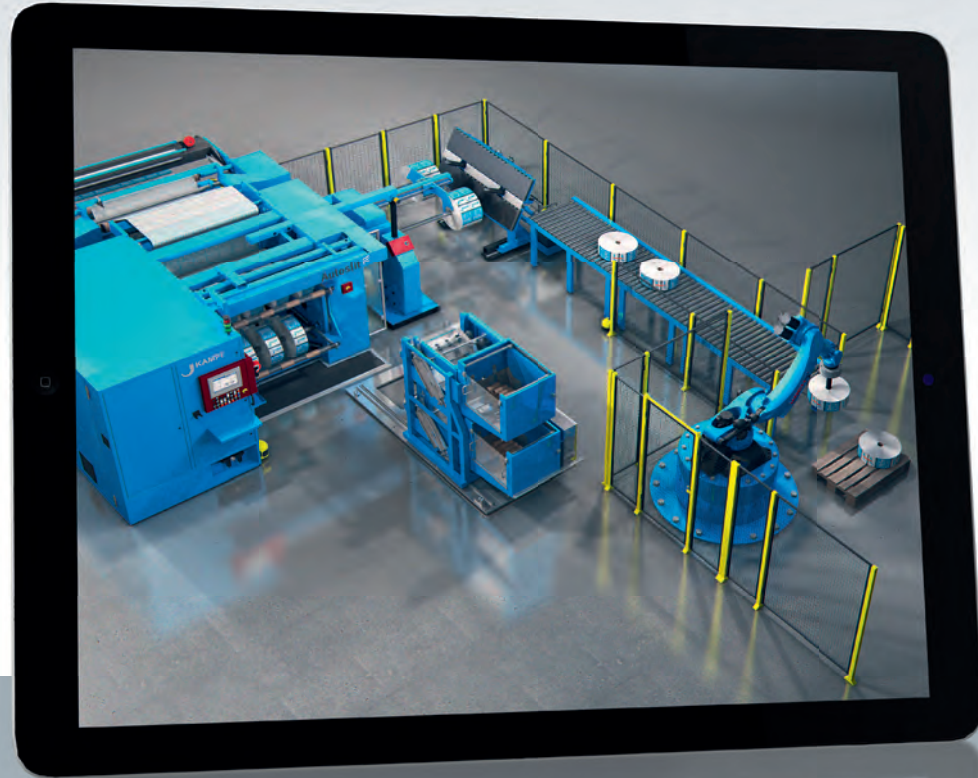


Adaptive handling solutions



Scan the QR code, or refer to our website www.kampf.de

Technical data

Material:	Plastic films, refined papers, laminates
Material thickness:	10 – 500 µm
Material width:	max. 2,250 mm
Parent roll diameter:	max. 1,300 mm
Finished roll diameter:	max. 630 mm
Finished roll weight:	max. 600 kg
Slitting system:	Razor blade cut / shear cut
Slitting width:	from 25 mm upwards
Winding cores:	70 mm / 3" / 6"
Machine speed:	max. 1,000 m/min



WORLDWIDE PARTNER

■ Corporate Head Office in Wiehl/Germany
Kampf Schneid- und Wickeltechnik GmbH & Co. KG
 Muehlener Strasse 36-42
 51674 Wiehl, Germany
 fon +49 2262 81-0
 fax +49 2262 81-201
 info@kampf.de
 www.kampf.de

■ Used Machinery
Maschinen Ritter-Wickeltechnik GmbH
 Alfred-Nobel-Strasse 2
 51588 Nuembrecht, Germany
 fon +49 2293 9080-0
 fax +49 2293 9080-10
 wickeltechnik@maschinenonline.com
 www.maschinenonline.com

■ USA
Kampf Machinery Corp.
 Kennedy Technology Center
 900 River Street, Unit H
 Windsor, CT-06095
 fon +1 860 640 0040
 fax +1 860 640 0046
 info@kampfusa.com
 www.kampfusa.com

■ USA
Kampf WT, LLC
 1655 Murfreesboro Rd, Suite A
 Nashville, TN 37217
 fon +1 615 361 4140
 fax +1 615 361 4174
 info@kampfw.com
 www.kampfw.com

■ India
Kampf Machinery India Pvt. Ltd.
 508 Atlantis Heights, Sarabhai
 Compound, Near Genda Circle
 390007 Vadodara, Gujarat
 fon +91 962 404 4922
 service@kampf-india.com



■ China - Hong Kong
Kampf (Hong Kong) Co., Ltd.
 Room 803, 8/F
 Wanchai Commercial Centre
 194-204 Johnston Road, Wanchai
 Hong Kong
 fon +852 2882 1136
 fax +852 2576 6110
 kampfhk@kampf.com.hk

■ China - Shanghai
Kampf Machinery (Shanghai) Co., Ltd.
 No. 1212, Lixue Rd
 Malu Town, Jiading District
 201801 Shanghai
 fon +86 21 5951 8029
 fax +86 21 5951 8040
 kampf@kampfshanghai.com

SLITTER. WINDER. KAMPF.

Autoslit  *The dual turret slitter*



Pure productivity

SLITTER. WINDER. KAMPF.

Autoslit – pure productivity



Your requirements

Cost pressure and short delivery times are key factors in your everyday business.

Productivity, flexibility and quality define your machinery!

Success in a dynamic and highly competitive market is your target!

Customer satisfaction is your highest priority!

The solution

Autoslit

The high-speed dual turret slitter with very short changeover times and maximum productivity!

Your added value

Combining the worldwide successful Conslit series concept with a highly productive winding system guarantees you reliability and flexibility for the future.

Take advantage of the many automation possibilities to improve the efficiency of slitting while simultaneously reducing the workload of the operating personnel.

Discover the advantage of quick setup times even when processing small batches.

Use the constantly high production speed with consistently high quality for the processing of large orders.



Your investment will pay for itself – at high speed!

Highest productivity

- At speeds up to 1,000 m/min
- With short set-up times:
 - comfortable slitting width adjustment, ergonomically designed
 - precise core positioning, either manual or fully automatic positioning
 - comprehensive finished roll handling, up to the complete packaging on a pallet
- Through a variety of other options

Pioneering flexibility

- The overhead material web path allows further possibilities as:
 - web inspection
 - web treatment
 - and many more
- Minimum downtime during service request thanks to the unique KAMPF Service Portal (KSP):
 - a global virtual remote maintenance service
 - maximum TÜV IT-certified security

It's the slit that counts

- Flexible and interchangeable slitting module:
 - razor blade cut
 - shear cut
- Knife adjustment manually, semi-automatic or fully automatic

Roll quality without compromise

- Perfect winding geometry
- Automatic and reliable roll closure
- Dedicated roll handling



Wide range of applications – plastic films, refined papers, laminates



Unwind – operator-friendly and energy-efficient



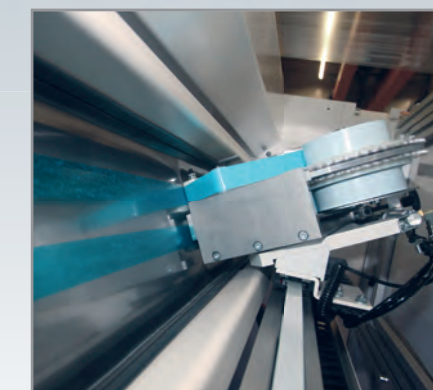
Option: Automatic knife adjustment



Linear contact module



Dynamic support of winding shafts



Option: Cross-web-taping



KAMPF 2-touch navigation